

Catamaran *E-hybrid*



ELECTRIC HYBRID CATAMARAN

Pinball BOAT

BY OCQUETEAU

SHIPYARD SINCE 1950

BETWEEN TRADITION AND INNOVATION. PINBALL BOAT IS A START-UP CREATED IN 2016 AND LOCATED IN FRANCE. IT COMBINES EXPERIENCE OF PASCAL, CREATOR AND FORMER CEO OF GOUPIL EV, ELECTRIC VEHICLE EUROPEAN LEADER WITH SKILLS OF STÉPHANE, 10 YEARS OF SUCCESSFUL BOAT DESIGN WITH OCQUETEAU. STARTING FROM A RETHINKING OF NEW USES OF YACHTING, OUR ENVIRONMENTALLY FRIENDLY CATAMARAN *E-hybrid* IS A GAME CHANGER FOR BOAT INDUSTRIES.

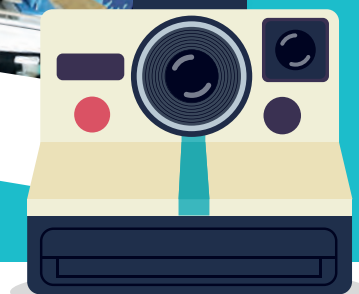
IN SEPTEMBER 2020, WE RELAUNCH OCQUETEAU SHIPYARD WITH ITS 70 YEARS TRADITION OF BOAT CONSTRUCTION. ON OLÉRON ISLAND WE ARE NOW MANUFACTURING OCQUETEAU OSTREA RANGE WHICH HAS CONTRIBUTED TO OCQUETEAU SUCCESS AND OUR INNOVATIVE ELECTRIC-HYBRID CATAMARAN.

SETTING OUT WITH THE GOAL OF BUILDING THE MOST EFFICIENT BOAT WE COULD, OUR 9 METERS BY 3 METERS CATAMARAN IS A DUAL-MODE ELECTRIC-HYBRID WITH PATENTED TECHNOLOGY (1 ENGINE, 3 ELECTRIC MOTORS). LIKE NO OTHER, IT IS EASY TO HANDLE, UP TO 15 PEOPLE ON BOARD, FUEL EFFICIENT. IT HAS ALL BENEFITS OF A PURE ELECTRIC BOAT WITHOUT RANGE ANXIETY.

TO GET YOU CLOSE TO THE SEA, WE HAVE IMAGINED A LEISURE PLATFORM WITH 20M² OF USEFUL FLOOR PLACE WITH ON-BOARD ACCESSORIES: PLANCHA, PADDLE, KAYAKS AND A TILTING PLATFORM AT WATER LEVEL!

SIMPLE, SAFE AND INTUITIVE TO USE, EASY TO MAINTAIN, THIS CATAMARAN IS A PREMIUM BOAT IN LINE WITH RISING ENVIRONMENTAL CONCERNS OF CUSTOMERS.

EXPERIENCE A MORE SUSTAINABLE, EFFICIENT, AND PEACEFUL BOATING DAY, CONTACT US!



THE ONE-OF-A-KIND ELECTRIC HYBRID BOAT



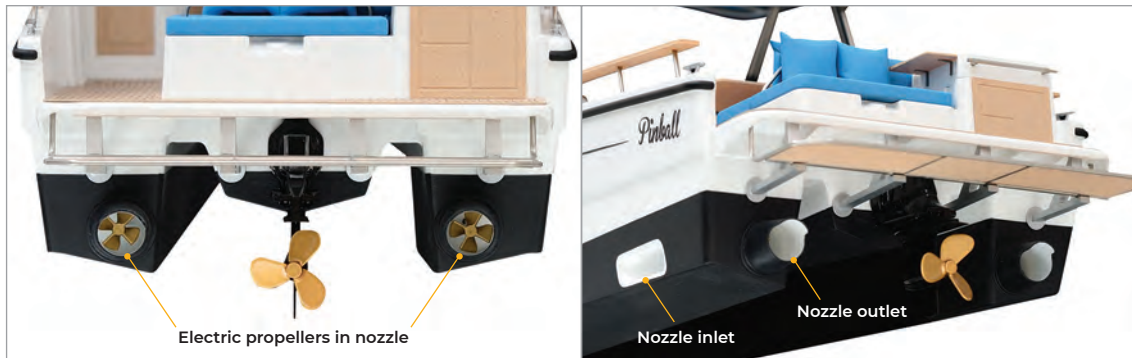
A CATAMARAN HULL

Hull is **the DNA of boats**. Our two sharp-looking half hulls offer low drag resistance when moving forward, ideal for electric propulsion.

Our catamaran hull offers more stability at anchor and greater performance on rougher waters: **our specific hull cuts through waves instead of hitting them.**

ELECTRIC RANGE

BOTH NOZZLE ELECTRIC PROPULSION AND HULL HAVE BEEN DESIGNED FOR MAXIMUM EFFICIENCY.



Nozzles are 30 cm diameter tubes, profiled to accelerate water flow forward. Range is 2 hours at 4 knts and 1h20 at 5 knts.



Batteries empty? Switch to hybrid and batteries will be recharged automatically!

EASY AND INTUITIVE OPERATION

ENJOY EASY YACHTING

9 meters long, Pinball is **easy to pilot**, even for the less experienced.

Both Electric and hybrid propulsions can be operate effortless with **a steering wheel** and **a single lever**. Pilot select **Electric** or **Hybrid** through two LED's switches respectively Bleu and Yellow. **A 10" screen** enhances understanding of how boat works.



MANEUVERABILITY IN ELECTRIC

INNOVATION FOCUSED ON PILOT !

> Reverse rpm in starboard nozzle generates a reverse flow of water. Resulting force makes boat turns powerfully round on its own length.



NO PROPELLER OUT OF HULL, PEACE OF MIND



> When operating in Electric, engine is off, sterndrive is up and electric propellers are secured in nozzles. This is better for swimmers safety and you can go gently in shallow water without the worry of damaging propellers.



When **BEACHING**, catamaran hull lays flat, no need for crutches.

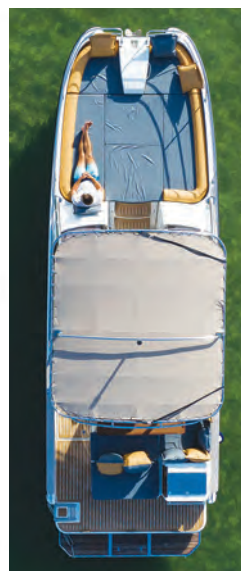
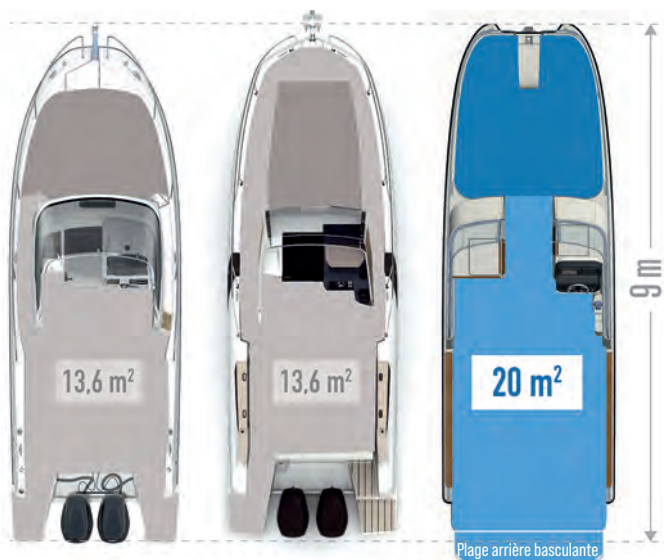
« BEACHING »

> Operating in Electric with tilting platform down, you can "beach" on a sandbank in reverse and pick up or drop off passengers very easily.



A 9 METER BOAT WITH SAME USEFUL FLOOR PLACE AS AN 11 METER BOAT

THE SHORTER IS THE BOAT, THE EASIER IT IS TO MANEUVER IN MARINA AND SPACIOUS DECKS MAKE A BIG DIFFERENCE !



We've designed PINBALL to have maximum floor space for a given length. Compared to 9 meter length competitors, Pinball offers 45% more useful floor space!

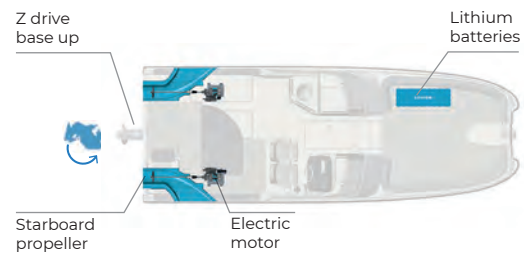
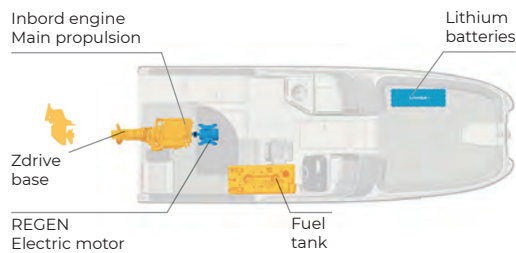
PINBALL IS
45%
MORE
FLOOR SPACE

DUAL MODE ELECTRIC-HYBRID PROPULSION

PINBALL IS A DUAL-MODE BOAT THAT COMBINES TWO BOATS IN ONE AN ELECTRIC BOAT AND A HYBRID BOAT



The pilot can choose between two operating modes: **HYBRID** ou **ELECTRIC**
Selection in neutral via two LED's switches, **YELLOW** and **BLUE** respectively.



> Pinball is mainly propelled by a sterndrive engine.

No range anxiety, on-the-go electric motor REGEN operates as a generator and recharges battery completely within 2 hours.

> Electric motors turn propellers in nozzles to move the boat. Motors are powered by a 22 kWh lithium battery.

When operating in electric, combustion engine is OFF and stern drive base is up.



As soon as boat is planing, the nozzles empty and boat behaves as if they did not exist.



The boat moves and maneuvers with no propellers and no moving parts out of the hull

HYBRID

THIS IS BEST MODE FOR COVERING LONG DISTANCES AT HIGH SPEED



ELECTRIC

THIS IS BEST MODE FOR CABOTAGE, NAVIGATION IN SHALLOW WATERS OR IN MARINE PARKS





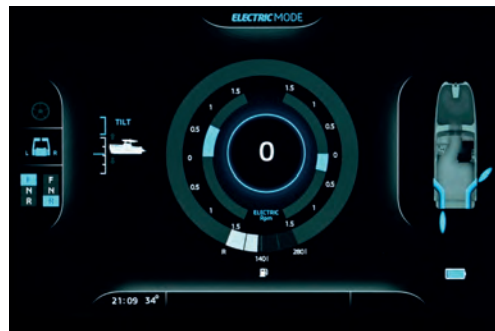
ELECTRIC MODE

IN ELECTRIC YOU CAN CHOOSE TWO WAYS TO PILOT YOUR BOAT



STANDARD CONTROL

A wheel and two levers.
Easy to get started, car logic.



ADVANCED CONTROL

Two levers:

Precise control for experienced pilots, each lever controls each electric motor.



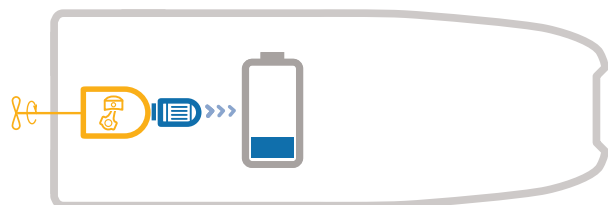
PILOTING YOUR ELECTRIC BOAT BECOMES AS EASY AS DRIVING YOUR CAR!

- > In Standard control, algorithm manages water flows so that the boat approaches a land vehicle trajectory.
- > When operating in Electric, nozzle algorithm provides high maneuverability and makes it easy entry-exit port to less experienced pilot !



BATTERY RECHARGE

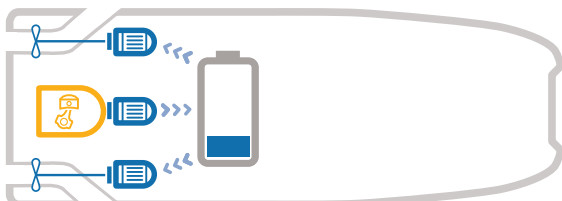
- > Battery can be recharged at the harbor on a conventional 230V-16A electric plug, full charge from 0% in six hours.
- > In **Hybrid operation**, REGEN electric motor, mechanically coupled to engine, works as a generator and fully recharges the batteries in 2 hours.



RANGE EXTENDER

ELECTRIC REGEN OPERATION

- > Sterndrive engine runs in neutral, acting as a generator to recharge batteries.
- > This is a serial hybrid operation that extends range of electric operation indefinitely in the event of damage to sterndrive base.



BOAT FEATURES



AT THE FRONT

> A huge 6 m² sunbathing area



CONVERTIBLE COCKPIT TABLE

> It offers 3 m² of additional sunbathing



AT THE BACK

> A large cockpit saloon with fluid circulation and an opening onto the sea.



EXTENSIBLE T-TOP

> Cockpit shadow on demand



PORT SIDE

½ TOILET-SHOWER CABIN

> Electric marine toilet, real toilets where you can stand up

IGLOO CABIN

> Sunbathing lifts with two electric actuators to access a berth of 2 meter x 1.4 meter



STARBOARD

½ LOGISTICS CABIN

> For dishes, towels... like on an airplane, 8 logistic boxes (30 cm x 40 cm) can be stored... Convenient, these boxes are designed for storage and transport, they can be stacked on a hand truck.



PLANCHA

- > A real on-board plancha, with a 30 cm x 45 cm cooking surface, means Mediterranean cuisine on board.
- > Easy to clean with a close at hand shower.



A LARGE COCKPIT TABLE

- > up to 10 guests comfortably seated around the table, with shade on demand thanks to the extendable T-Top.



100L DRAWER FRIDGE

- > A practical fridge with unlimited cold, it is powered by the lithium battery!





TILTING PLATFORM AT WATER LEVEL

> It's a safe starting point for paddling or kayaking.



LEISURE PLATFORM ON WATER

- > Combines sport, fun on the water and discovery of the marine environment.
- > 2 kayaks or 2 inflatable paddles can be strapped on the TTOP. Starting is easy thanks to our quick-fix system.



WIND PROTECTION CELL

> Protect your guests while boating or at anchor by completely closing the cockpit in line with the windshield.



HULL

Overall length	9m
Hull length	8m35
Hull beam	2m97
Air draught	3m
Draught	0.5 m
Mass light craft	3.8t
Capacity	Up to 15 people
EC category	C-ICNN certification
Fresh Water capacity	135l
Fuel capacity	420l
Igloo cabin	1
Berth	2

MOTORISATION

Max speed Hybrid	25 kts
Max speed Electric	5 kts (range 1h 20)
Stern drive inboard gas engine	V8 350 HP or 380 HP
Electric Propulsion	2 x 8 kW (S2-1h)
Main Battery	Lithium Battery 22 kWh - 48 V
Time full charge on main supply	5h (230V, 16A plug)
Time full charge in Hybrid (REGEN feature)	2h
Electric steering	Electric steering wheel & hydraulic steering servo-control
Throttle Lever	Digital

STANDARD FEATURES

TTOP inox	8,2 m ² extensible 2,6m ² more surface
Sunbathing area	6 m ²
On-board plancha gas	30 cm x 45 cm cooking surface
Outdoor sink	
Drawer fridge	100l - powered by the lithium battery
Tilting platform at water level	1,5m ² more floor space
Electrical windlass	Cockpit controls and anchor locker foot controls
Inflatable kayaks or paddles	quick-fix system on TTOP and 12V plug at the front for electric inflator*
½ toilet-shower cabin on port side	hand-washing shower Electric seawater WC with black water tank 105l
½ logistics cabin on star-board	Including 8 logistic boxes (30 cm x 40 cm)
Deck shower	

*** Not included**





HYBRID ELECTRIC



MORE INFORMATION

Pinball BOAT
BY OCQUETEAU

PINBALL BOAT • 3 Quai Goslar • 33120 arcachon • +33 6 08 02 79 21 • contact@pinball-boat.com • www.pinball-boat.com